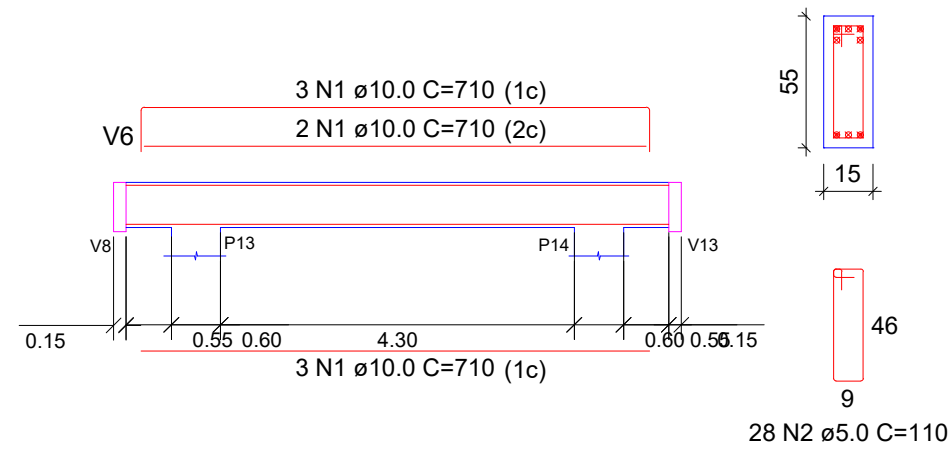
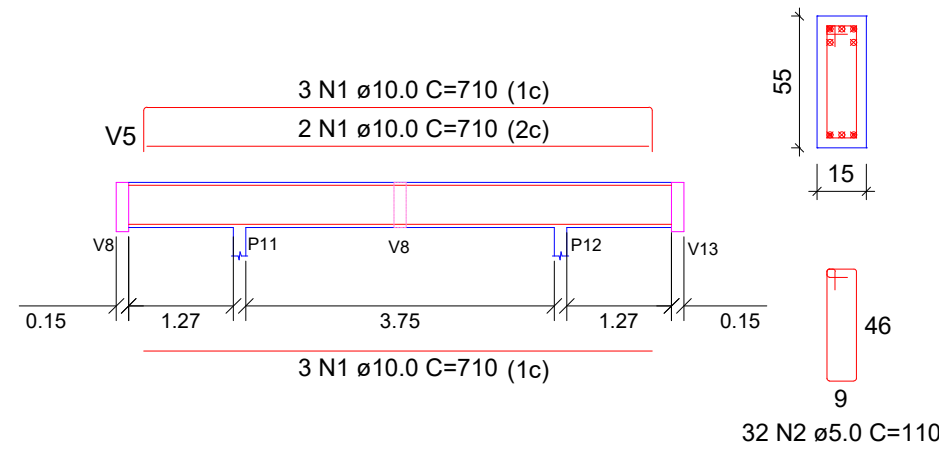
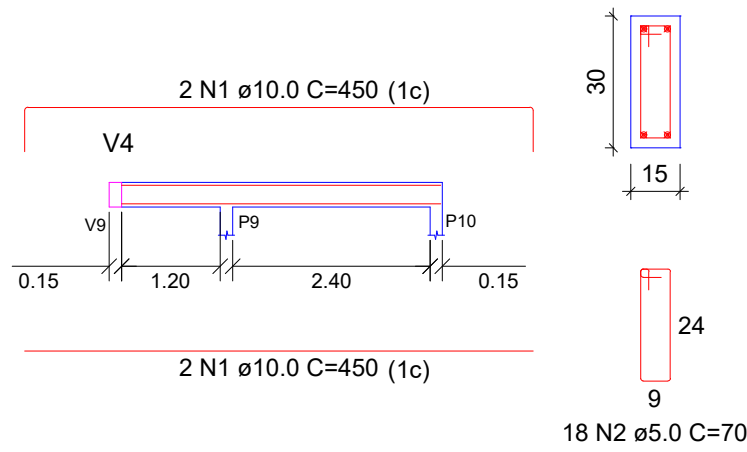
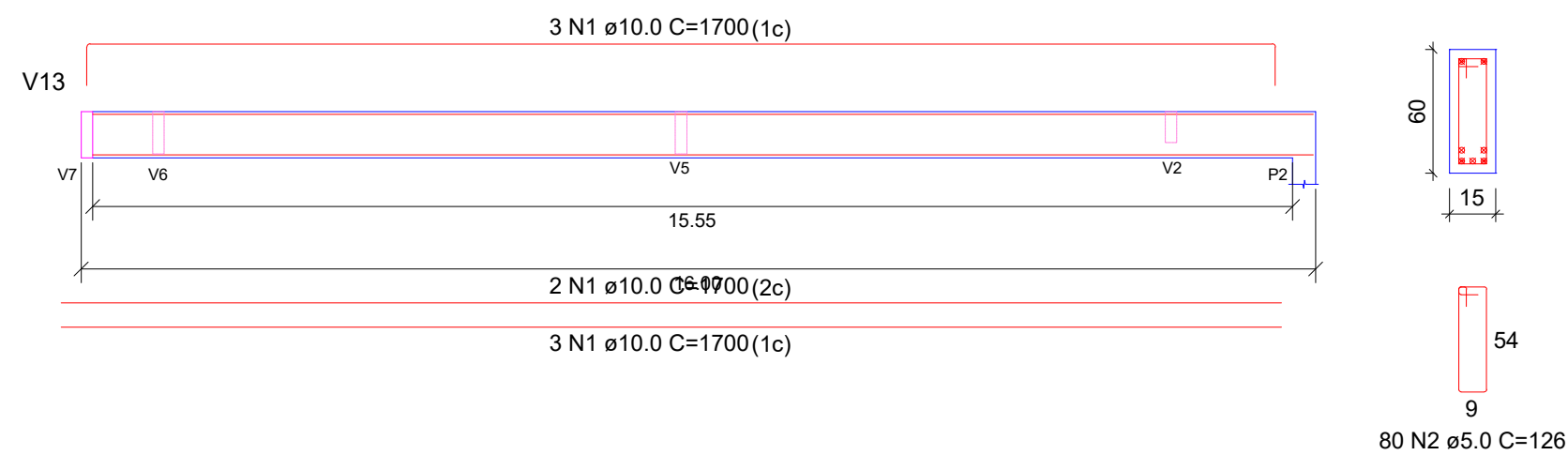
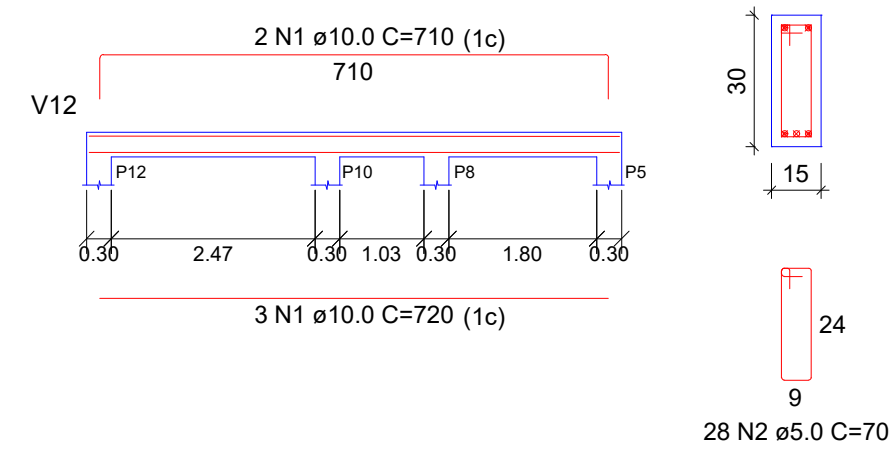
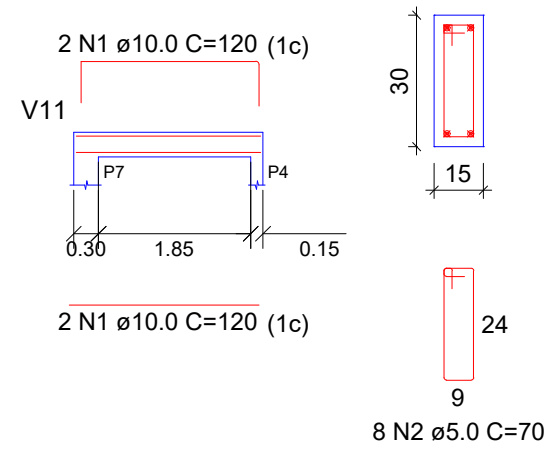
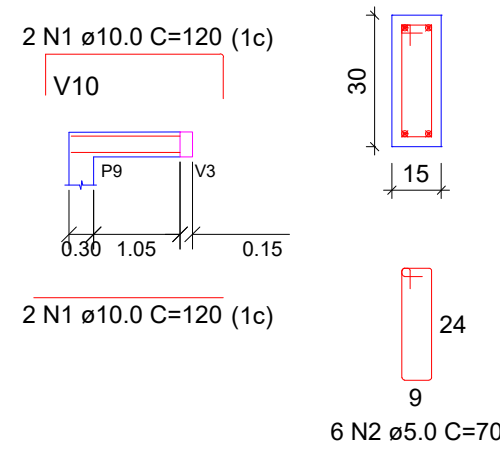
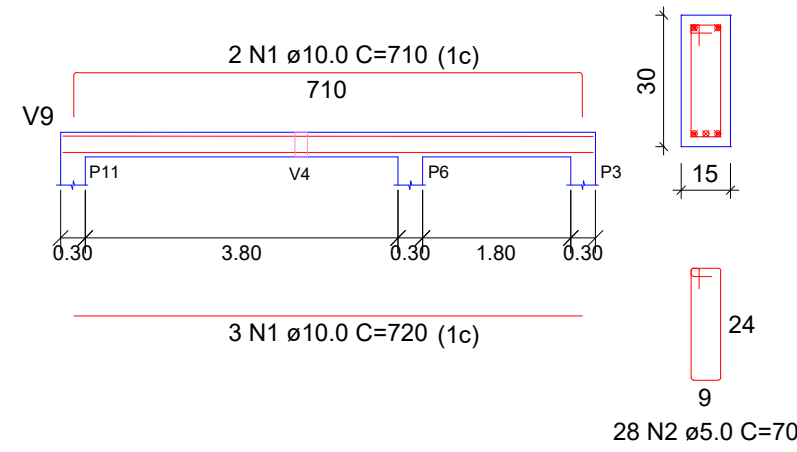
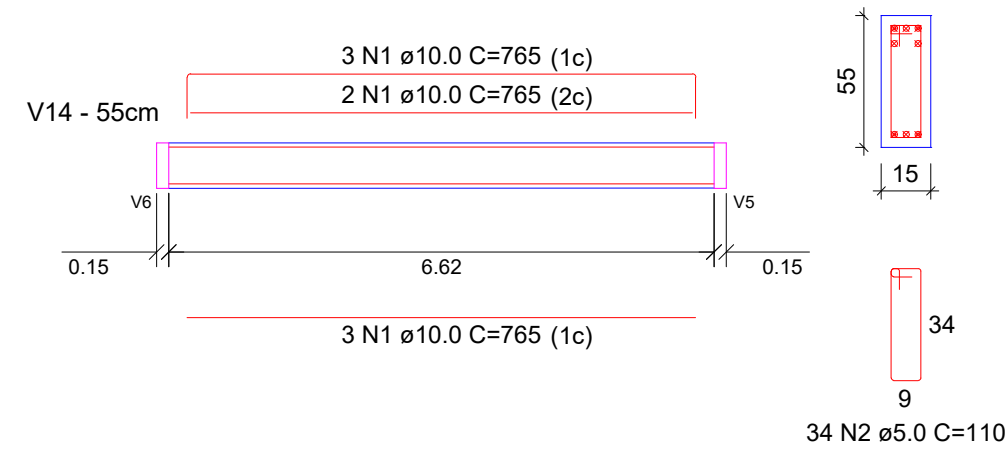
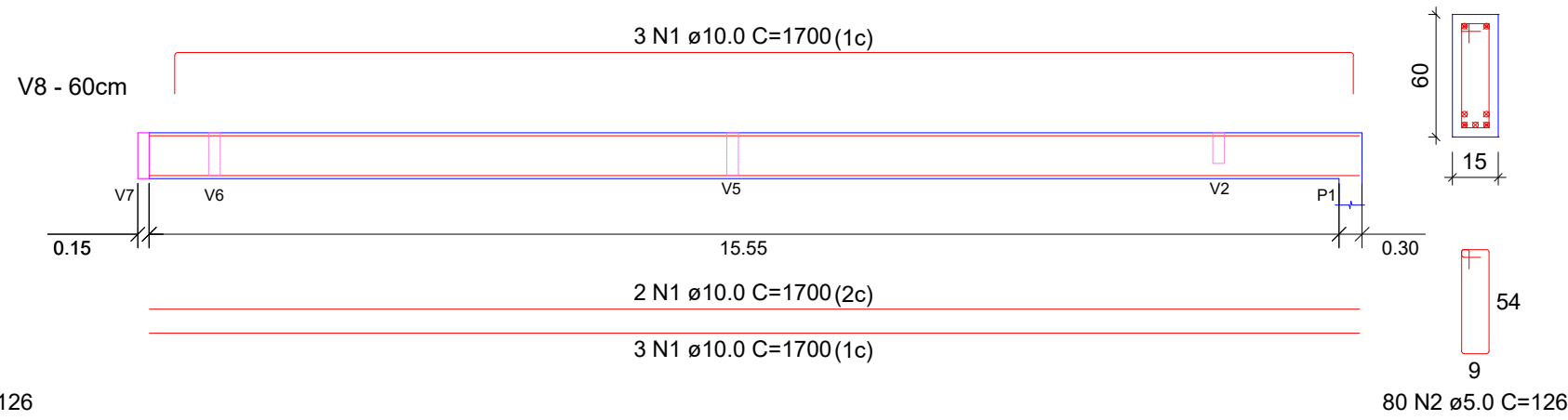
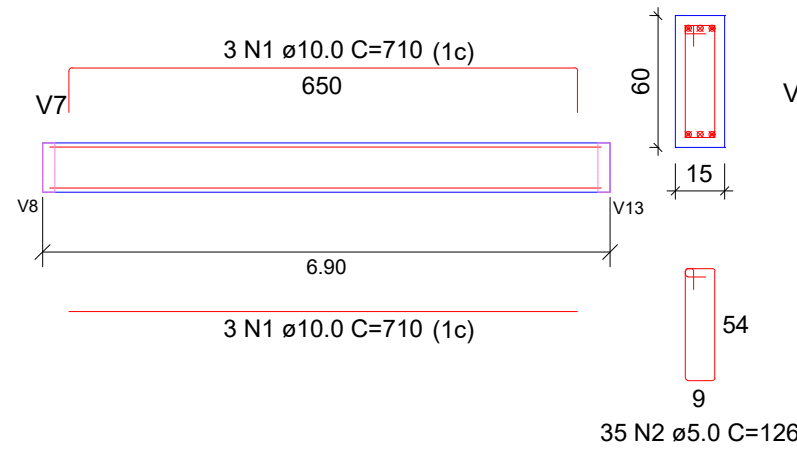


RELAÇÃO DO AÇO - VIGAS TERREO					
AÇO	N	DIAM (mm)	QUANT	C.UNIT (cm)	C.TOTAL +10% (cm)
CA50	1	10.0	VAR	VAR	75020.0
CA60	2	5.0	VAR	VAR	54305.9



RESUMO DO AÇO E CONCRETO			
AÇO	DIAM (mm)	C.TOTAL (m)	PESO + 10% (kg)
CA50	10.0	750.20	462.9
CA60	5.0	543.05	83.6
PESO TOTAL (kg)			
CA50		462.9	
CA60		83.6	

Volume de concreto (C-25) = 7,15 m³
Área de forma = 106,30 m²



TÍTULO: Projeto Estrutural – Revitalização da Praça do Sossego

ASSUNTO: Planta de Detalhamento das Vigas –Térreo

DATA: NOV./2024

ESCALA: S/ESC.

PRANCHA:

5/6

José Fernando Guedes Moço
Responsável Técnico
CREA: 2014102986